



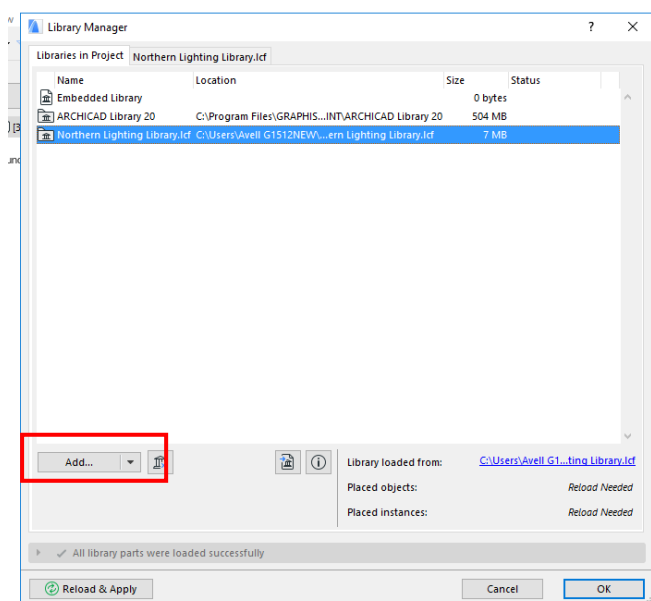
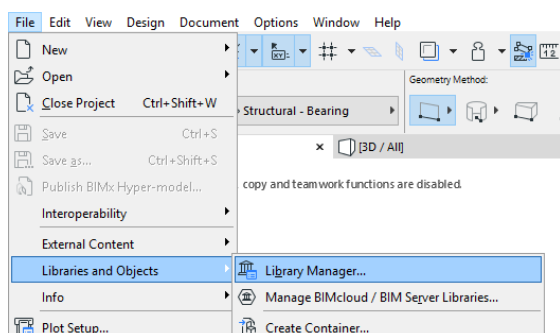
Jönköping, 18th May, 2017.
Convergo AB

Northern Lighting

Northern Lighting lamps for ArchiCAD – general instructions of usage

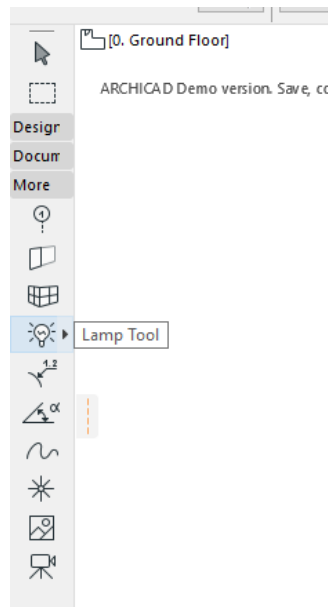
To get fully functioning of Northern Lighting ArchiCAD lamps, for versions 18 and later, please follow the steps below:

1. Add "Northern Lighting Library.LCF" file through ArchiCAD Library Manager;

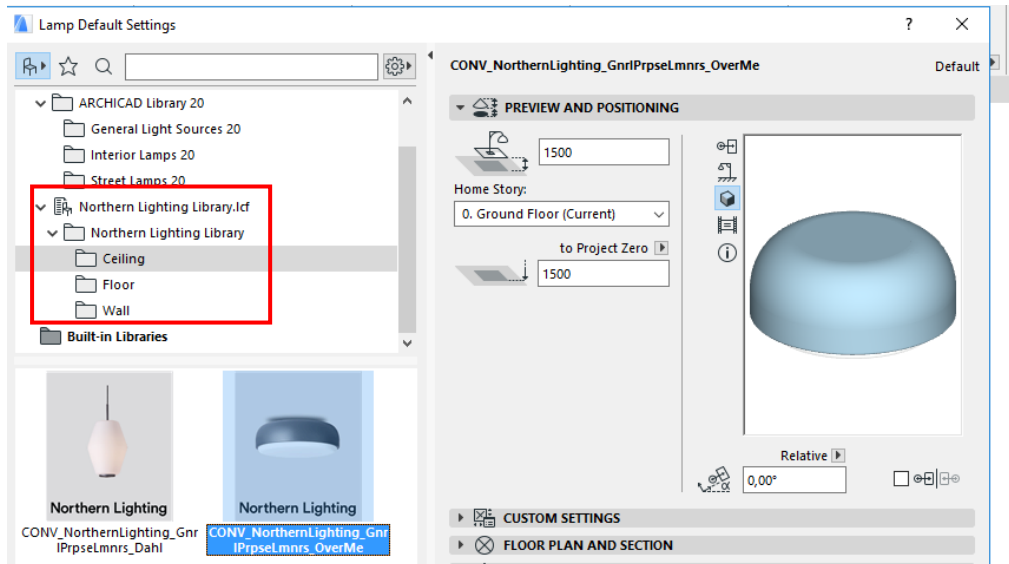




2. Go to Lamp Tool.

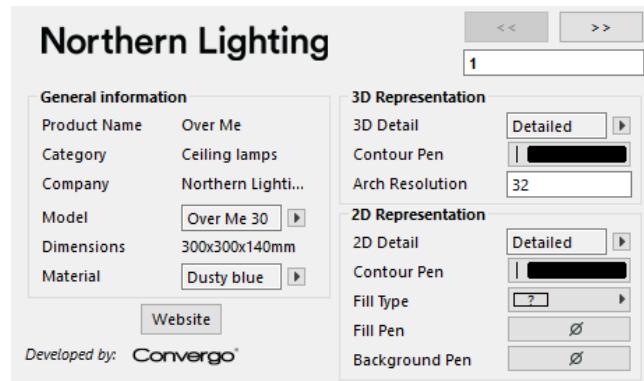


3. Container will be available on Linked Libraries List (Lamp Tool setting dialogue). Three main folders separate lamps according their categories: Ceiling, Floor and Wall. Pictures of products make easier their identification.

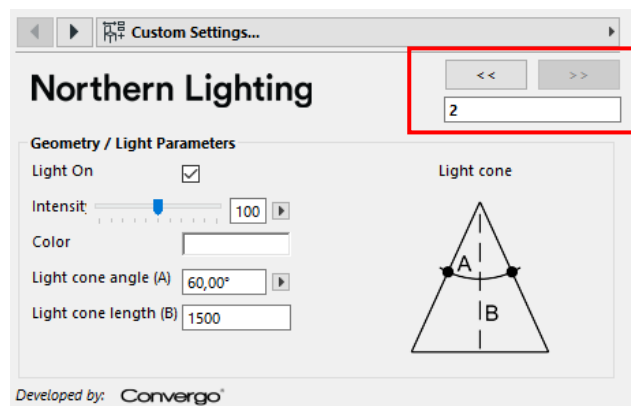




- Once a lamp is selected, ArchiCAD provides in its user interface two pages. The first one regards general product information, 2D and 3D representation, materials and model types (specific for "Over Me" collection).



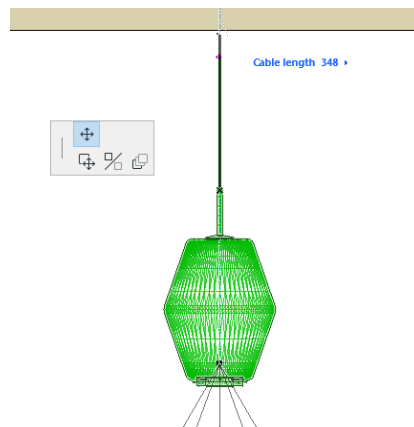
- The second page is accessed through page selector button (highlighted below). In this page, there are specific parameters for light performance, such as switch, intensity, colour and light cone settings (specific for "Me" and "Dahl" collections).



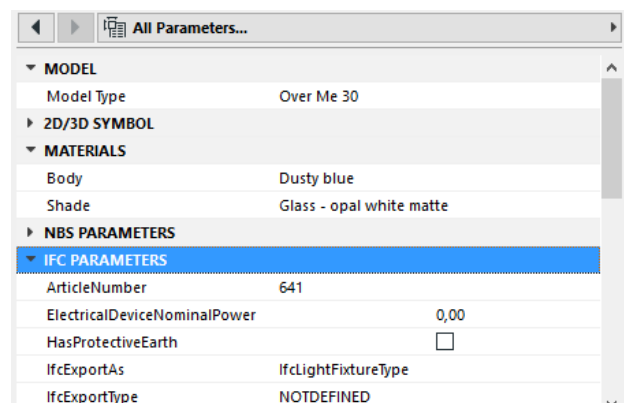
- The illustrations bellow show how the light performs in rendering presentations.



7. "Dahl" pendant has a hotspot, which allows user to define cable length, graphically (in 3D, section or elevation views). This option also is available in its Setting Dialog (second page).



8. In "All Parameters" tab page, there is a list containing parameters for materials, 2D representation, NBS, IFC, COBie and additional manufacturer's information.



Convergo apologies for inconveniences. We keep working hard to bring the most accurate solutions, in a fast feedback. Our team is available to solve any issues reported and clarifying any doubts.

Best regards,
Convergo AB